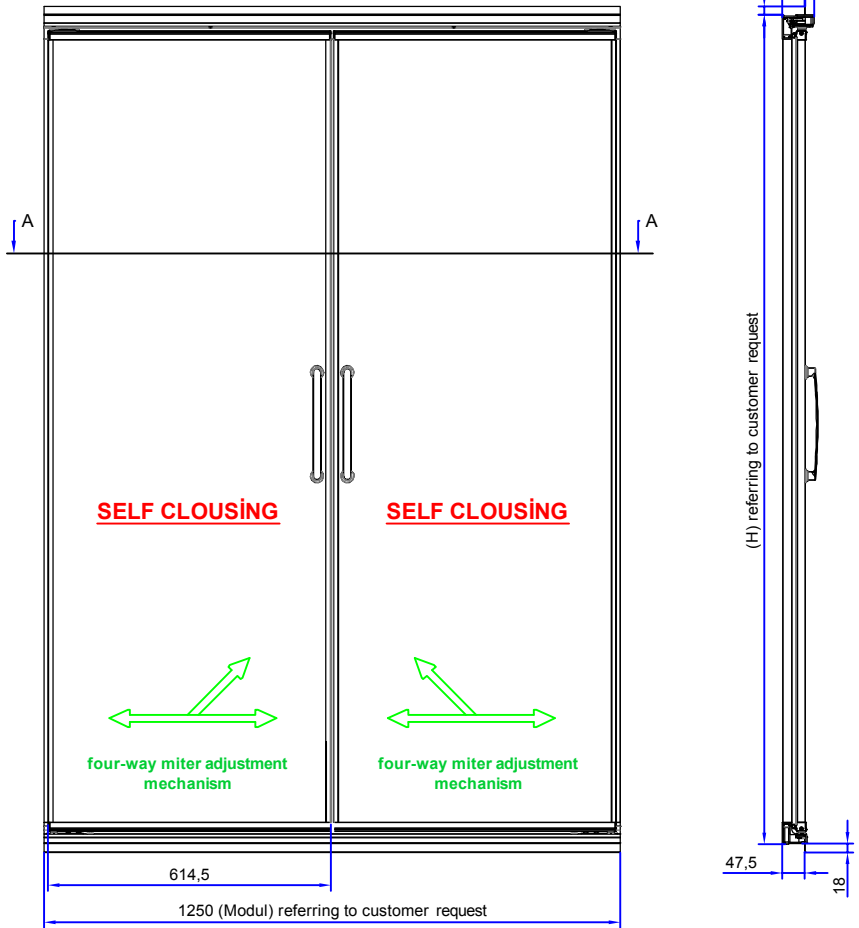
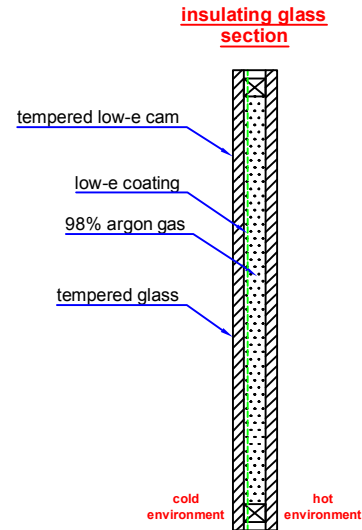
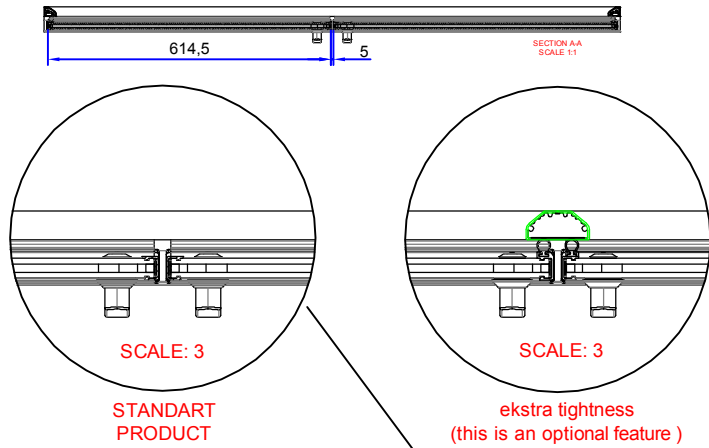
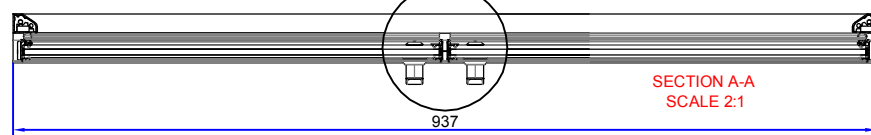
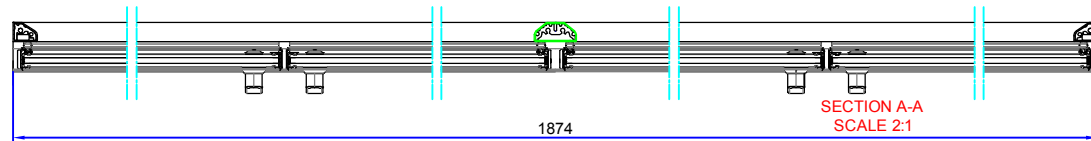
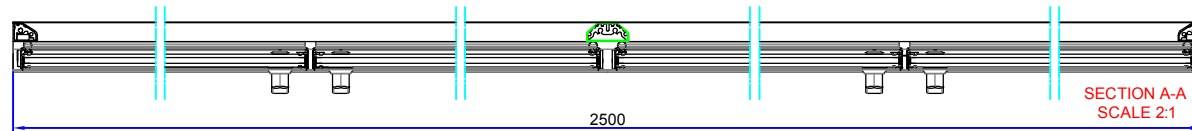
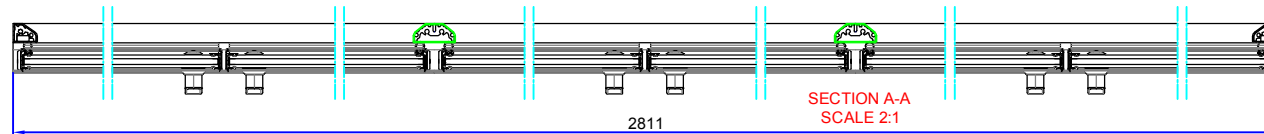


**PATENTED**
**(1250 Mod x H mm Envifit Slim Hinge Door)**
**1250 mod x (h) mm-2 doors**

**NOTE:**  
 this product is for cooler between 0° / +6° degrees.

**TECHNICAL DETAILS**

- self-closing mechanism
- disassembled forwarding if requested (in place easy installation with bolt mounting kits)
- extra insulated frame profiles
- effective cover miter adjustment system in three directions
- more viewing area with extra thin and strong profiles
- open door stop point (particularly useful in single use)
- all glass is tempered
- for saving energy and to prevent sweating all doors is filled with 98% argon gas
- low-e glass is used on all doors that saves energy and also reduce heat transfer by radiation

Modüller (moduls)	kapak sayısı (number of door)	H (height-mm)
937 modul	2	Müşteri isteğine göre değişir. (referring to customer request)
1250 modul	2	
1875 modul	4	
2500 modul	4	
2811 modul	6	
3750 modul	6	


**937 mod x (h) mm-2 doors**

**1874 mod x (h) mm-4 doors**

**2500 mod x (h) mm-4 doors**

**2811 mod x (h) mm-6 doors**

**3750 mod x (h) mm-6 doors**
