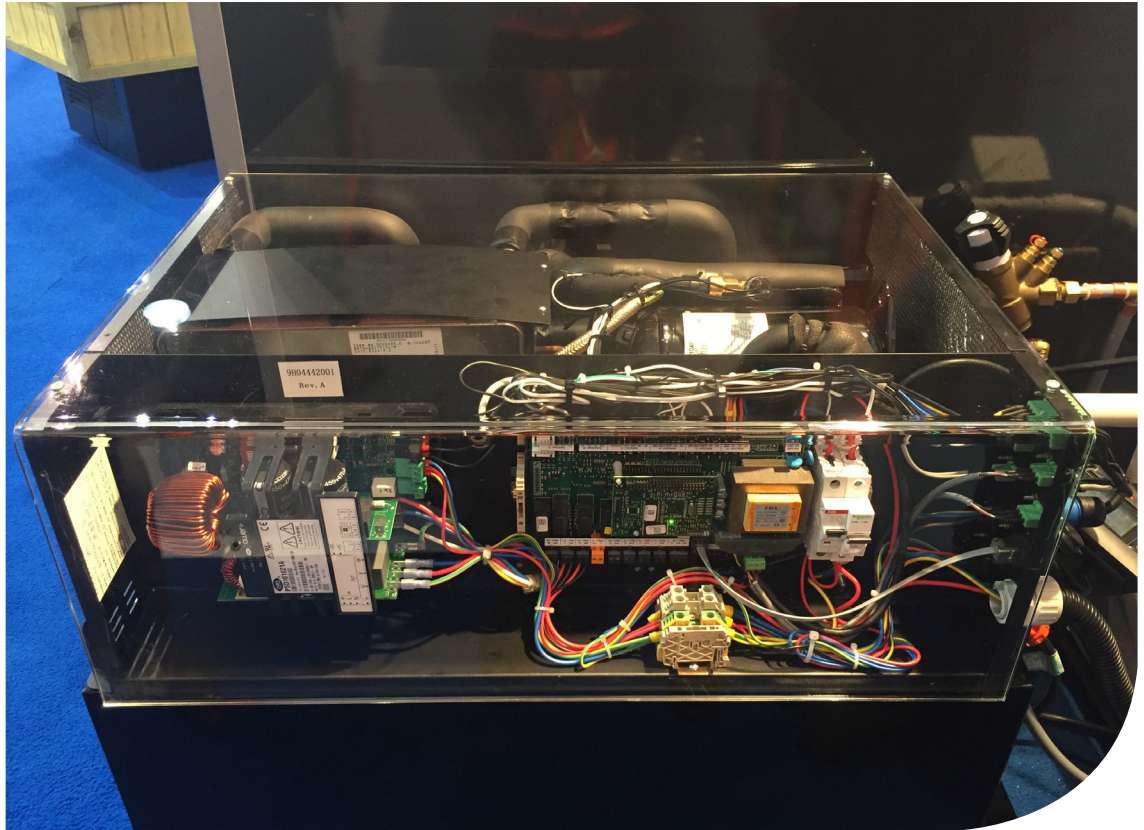


Specialty



---

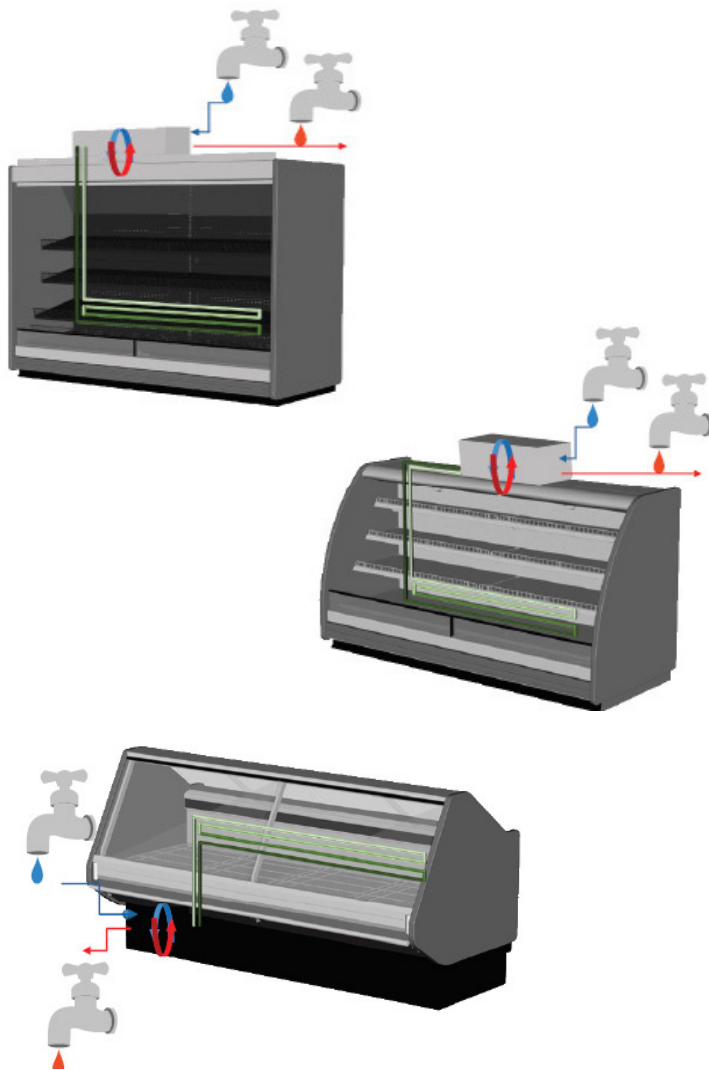
# Hussmann Waterloop



**HUSSMANN®**  
Wave Waterloop

### Waterloop Testing Journey

- Extensive testing of full range of cases
- Testing conducted in Australia, New Zealand and China R&D facilities
  - R410A
  - Carel Inverter and EXV
  - Toshiba BLDC compressors
- Wide range of climate class conditions
  - AS1731 (class 0 (20°C/50% RH)
  - AS731 class 3 (25°C/60% RH)
  - AS1731 class 6 (27°C/70% RH)
- Outdoor air temperature condition:
  - 0°C to 40°C
- Full range water inlet temperature:
  - Ambient free cooling (non chilled)
  - Chilled Water
  - Cabinet performance enhanced with inverter drive and EXV
- Energy performance validated on individual cabinets
- Controller, compressor, heat exchanger and EXV operation and optimisation
- Air cooled Inverter for reliable operation in all conditions



### Features

- Ball valve access on outside of box for refrigerant and water circuits
- Schrader valves on outside of box
- All powered sockets are quick disconnect with twist lock safety feature
- Probes, digital switch and RS485 monitoring input all push in sockets

### Integrated Features

- Optimised design for local conditions with or without chiller (selection specific)
- Liquid injection on LT units (compressor safety feature)
- Heat exchanger outlet is located above the receiver inlet to enhance performance
- Oil management optimised by suction line gas velocity with controller algorithm activated in all cabinets for high speed ramping to pull oil back.
- Refrigeration and electrical components are segregated within the box
- Low and high voltage wiring and components are segregated also
- 10Amp auxiliary socket included on box
- Critical charge with minimum refrigerant mass
- Smart initiation defrost option
- Common components used across range of box sizes
- Low overall box height to reduce visual impact
- Can be integrated into our Hussmann Cabinets during cabinet manufacture (order specific), which includes:
  - Pre-piped
  - Pre-charged with refrigerant
  - Pre-wired
  - Pre-programmed and test run at factory
  - On site install (when factory integrated) only requires:
    - › placing/setting cabinets
    - › Power supply
    - › Drainage connection
    - › Water (heat rejection) piping and system

### Additional Information

Dimensions and features are subject to change, Please obtain current information prior to order confirmation.  
 NOTE: We reserve the right to change or revise specifications and product design in connection with any feature of our products. Such changes do not entitle the buyer to corresponding changes, improvements, additions or replacements for equipment previously sole of shipped.

**HUSSMANN®**

### McAlpine Hussmann

2-6 Niall Burgess, Mt Wellington  
 Auckland 1060  
 Ph: 0800 473374

[www.mcalpinehussmann.co.nz](http://www.mcalpinehussmann.co.nz)