

ICE Range



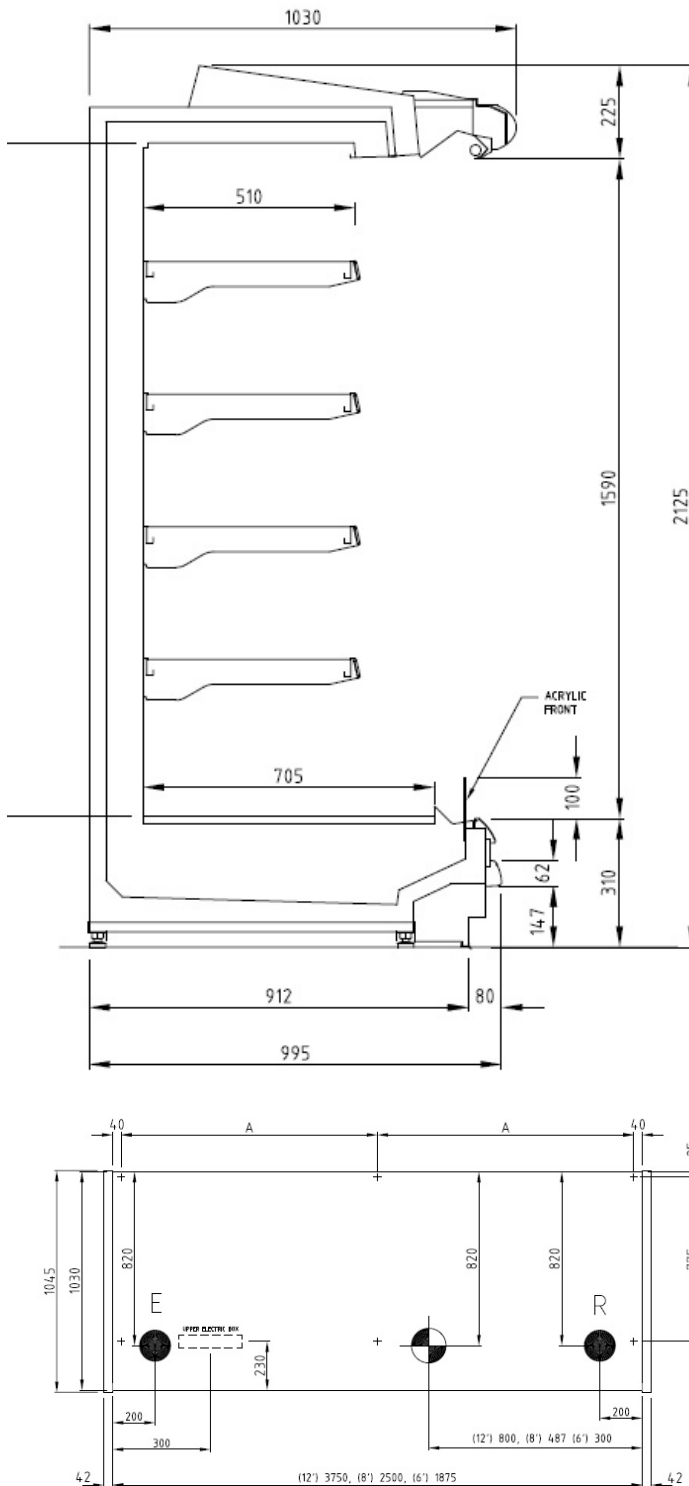
MJPE216 Fish

Multi-Jet Medium Temperature Cabinet with Enhanced
Energy Efficiency and Versatility

“Warmer Aisles Happier Customers”

Multi-Jet Medium Temperature Cabinet with Enhanced Energy Efficiency and Versatility

MJPE216 Fish



Available Lengths (Excluding Ends)

1250mm 1875mm 2500mm 3750mm

Features

The MJPE216 Multi-Jet offers greatly reduced energy consumption compared to traditional open-face multi-deck cabinets.

The technically advanced multi-channel and multi-velocity air curtain ensures merchandise is isolated from the ambient store temperature. This ensures product temperatures are at their optimum and shelf-life is extended.

This Multi-Jet design also greatly reduces the amount of cold aisle - "Warmer Aisles Happier Customers".

Temperature Class

3M0

Benefits

- Increased sales with optional shelving
- Extended product life with effective refrigeration
- Energy cost reduction through advanced cabinet design
- Temperature compliance
- Excellent product presentation with angled shelves
- Lighting optimisation with LED option
- Maximisation of floor space
- Minimum life cycle cost
- Environmental and EHS commitment
- Greatly improved shopper ambient comfort

Standard

- Angled shelving 0°, 10°, 15°
- Case depth 995mm
- Front height 518mm (310mm + 208mm glass front display)
- 460mm deep shelves
- Fluorescent lighting

Options

- Shelving depths of 400mm, 460mm or 500mm
- Stainless steel shelving and deck pans
- Hang sell bars and hooks
- LED or Fluorescent lighting
- Wire or perspex shelf fences

Additional Information

Dimensions and features are subject to change. Please obtain current information prior to order confirmation.

NOTE: We reserve the right to change or revise specifications and product design in connection with any feature of our products. Such changes do not entitle the buyer to corresponding changes, improvements, additions or replacements for equipment previously sold or shipped.

HUSSMANN®

McAlpine Hussmann

2-6 Niall Burgess, Mt Wellington

Auckland 1060

Ph: 0800 473374

www.mcalpinehussmann.com